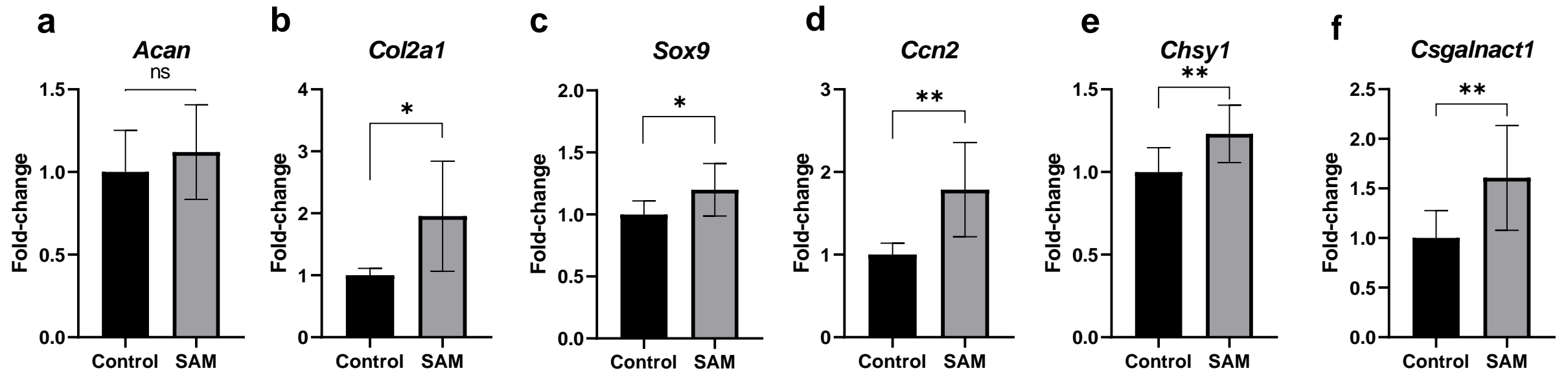
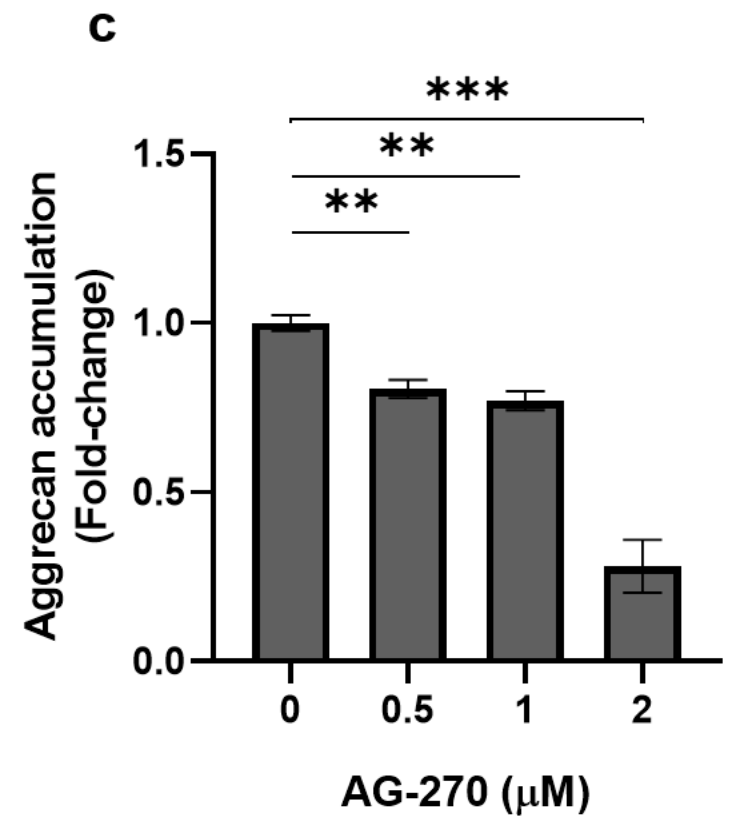
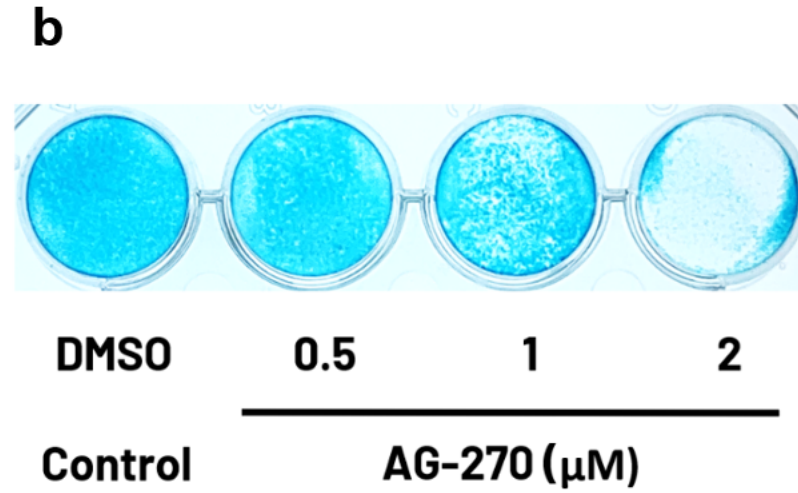
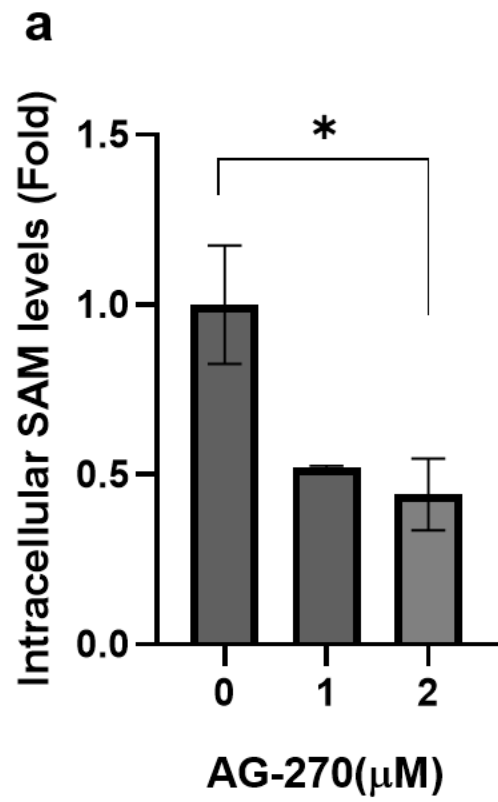


Supplementary Figure 1. SAM enhances aggrecan production in RCS cells without promoting proliferation.

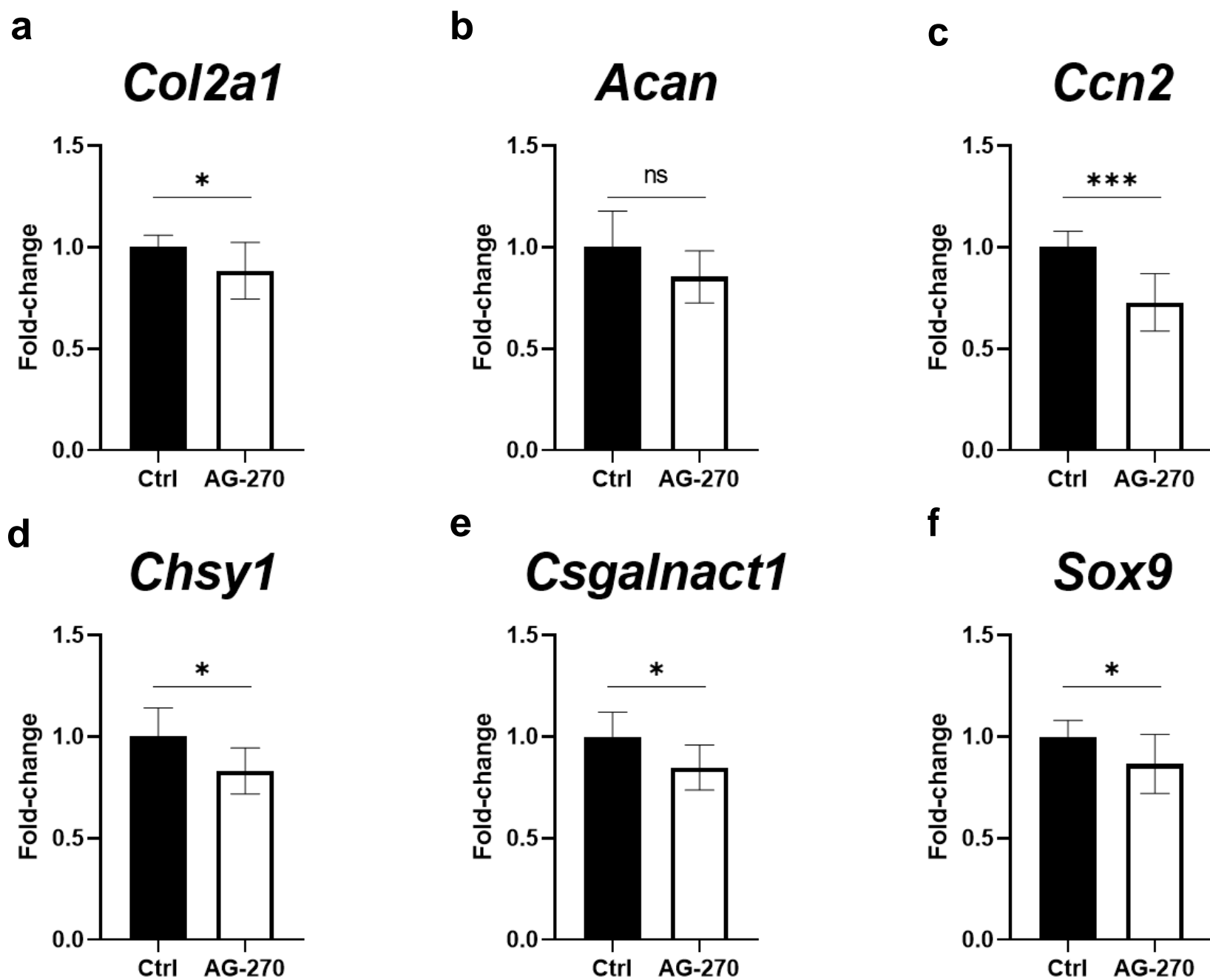


Supplementary Figure 2. SAM enhanced the gene expression of cartilage-specific markers, chondrogenesis associated factors and enzymes involved in chondroitin sulfate synthesis in RCS cells.

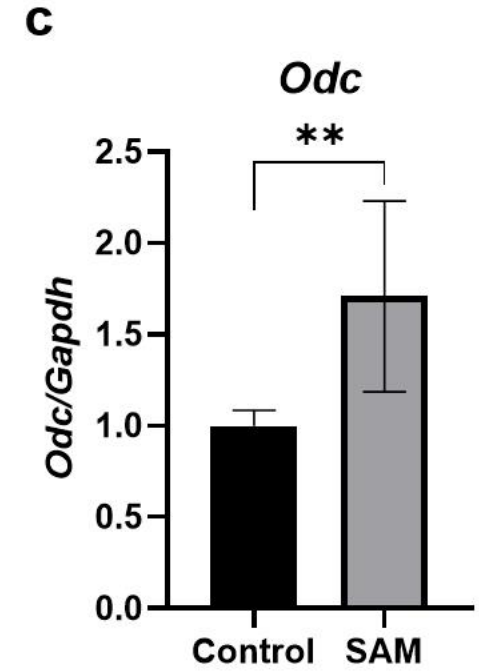
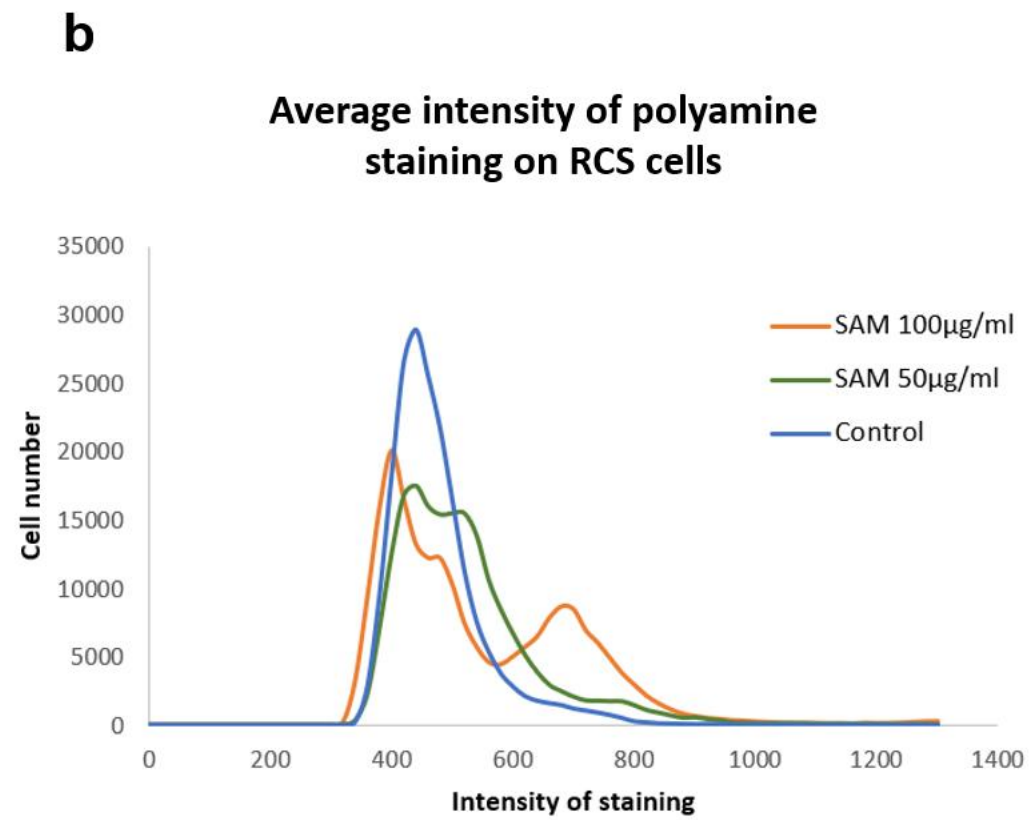
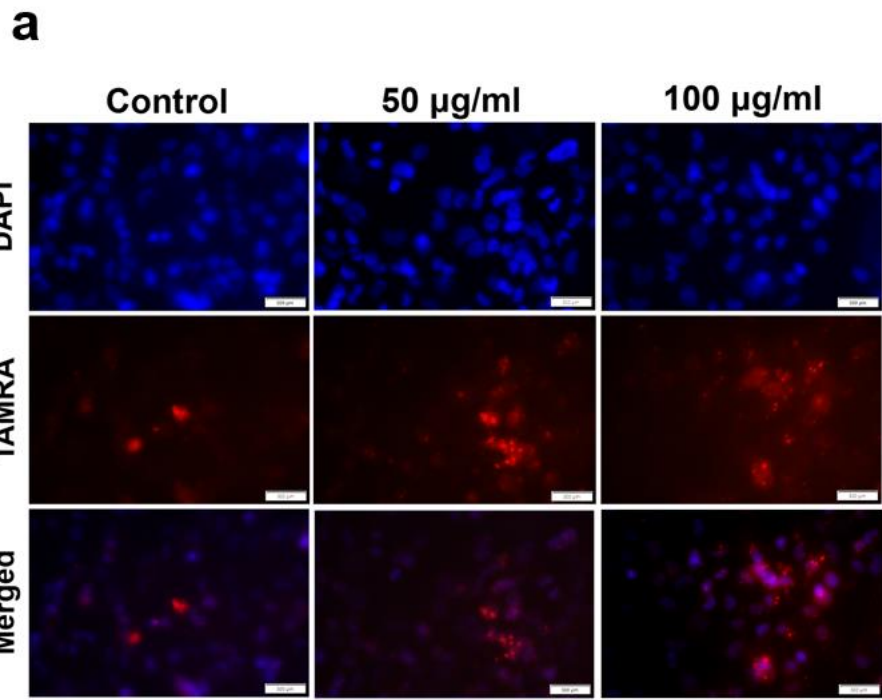


Supplementary Figure 3. Inhibiting intracellular SAM synthesis suppresses aggrecan accumulation in RCS cells.

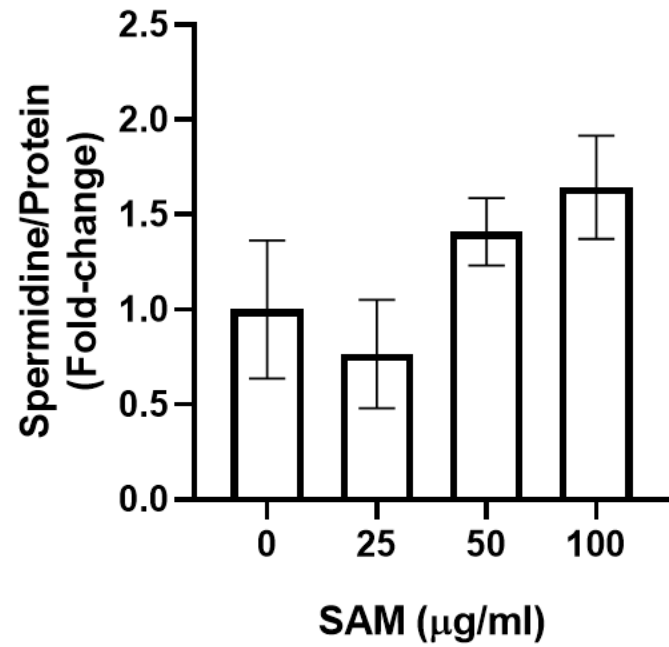
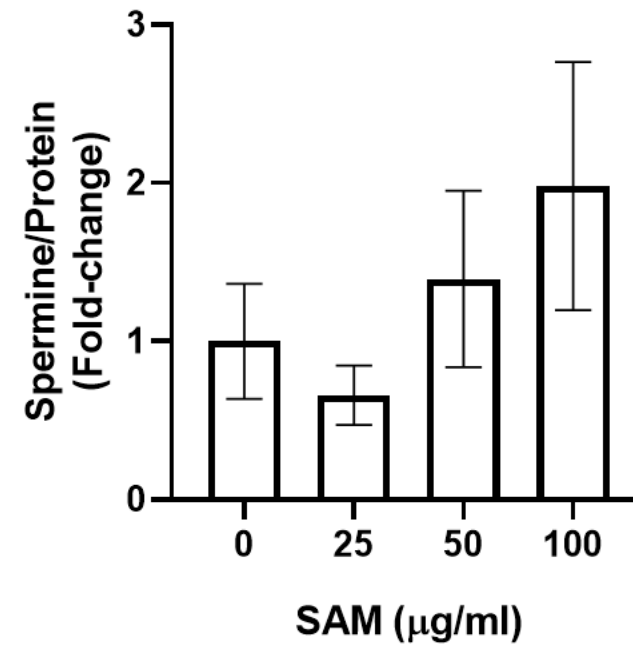
RCS



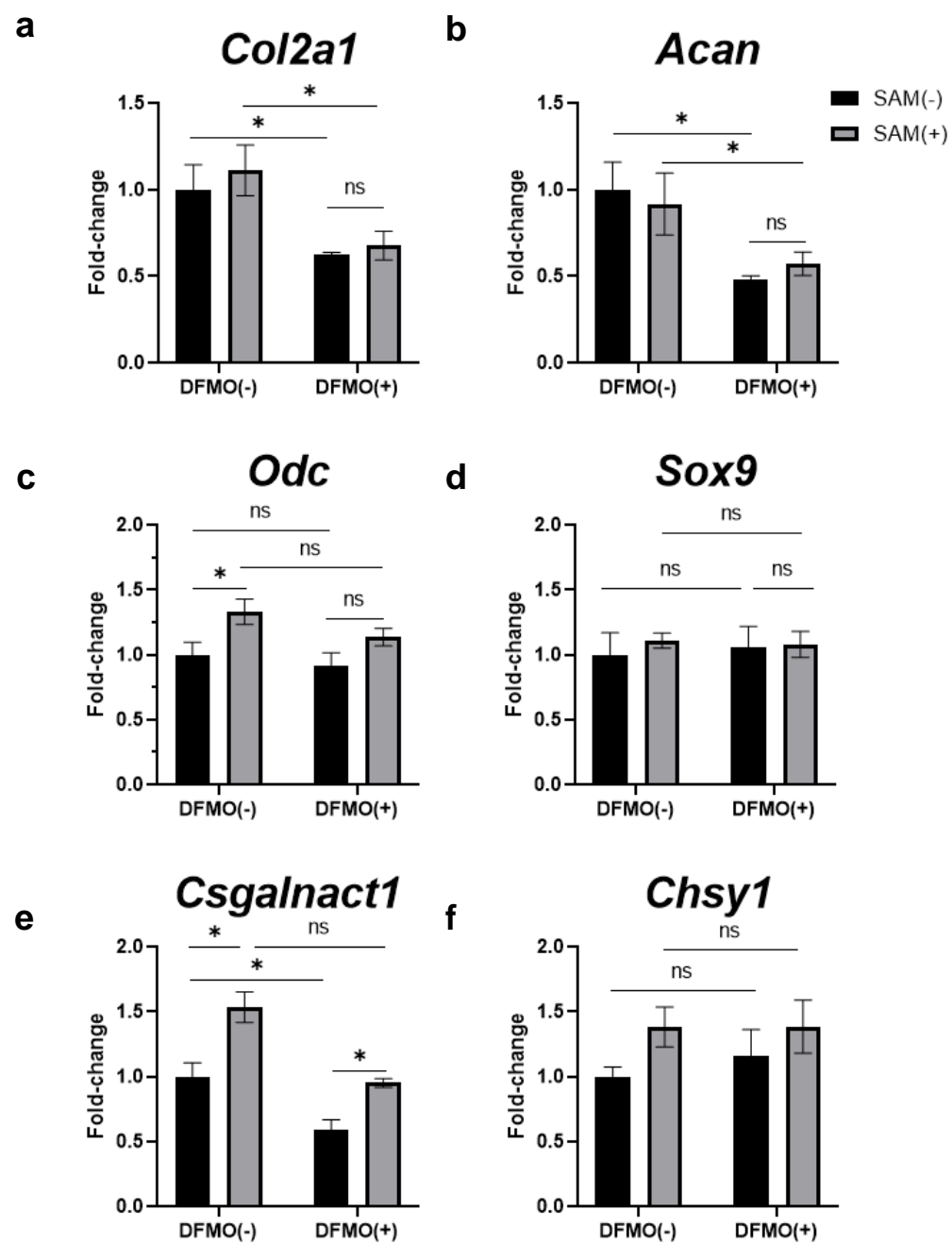
Supplementary Figure 4. Effect of AG-270 on the induction of the gene expression by SAM in RCS cells.



Supplementary Figure 5 (a)-(c). Exogenous SAM promoted polyamine production in the chondrocytic cell line.

d**e**

Supplementary Figure 5 (d)(e)Exogenous SAM promoted polyamine production in the chondrocytic cell line.



Supplementary Figure 6. Effect of DFMO on the SAM-induced gene expression in RCS cells